

Block, October 1&2

DJ: What advantages did the Indian Sea network have over the Silk Roads?

HW: 1) Chapter 9 T 10/7 2) 4-5 topics F 10/3

Ann.: Ch. 9 Quiz 10/8

Today:

- 1) Silk Roads Discussion Groups
- 2) Intro. Continuity & Change Silk Roads Question
- 3) Spread of Buddhism Reading
- 4) Adept at Adaptation Activity
- 5) Ch. 8 Quiz

Impact of Contributions of each network:

a) Sea Lanes:

b) Silk Roads:

c) Sand Roads:

1. Name the written document authors and explain one aspect of the speaker for each that would influence their observations.
2. Of the three travelers, which account do you think is the most reliable and why?
3. Of the three travelers, which account do you think is the least reliable and why?
4. The visual documents show the influence of many different cultures. For each document, name the local culture and the outside culture or cultures influencing the visual.
5. What is Manichaeism?
6. In what ways do the visual sources indicate that the peoples of Central Asia were changed by their interactions? In what ways did they retain elements of their earlier cultures?

2. Analyze continuities and changes in patterns of interactions along the Silk Roads from 200 B.C.E. to 1450 C.E.

Continuity & Change Over Time

2. Analyze continuities and changes in patterns of interactions along the Silk Roads from 200 B.C.E. to 1450 C.E.

	Same	Changed
Beginning	<ul style="list-style-type: none"> • lux. items • Emp. - security • trade/bribe • harsh geo. 	<ul style="list-style-type: none"> • China → horse
Middle	<ul style="list-style-type: none"> • 	<ul style="list-style-type: none"> • merchant class • use of sea networks • ideas & sand
End	<ul style="list-style-type: none"> • 	<ul style="list-style-type: none"> • replaced by sea

(Why??) (Why??)

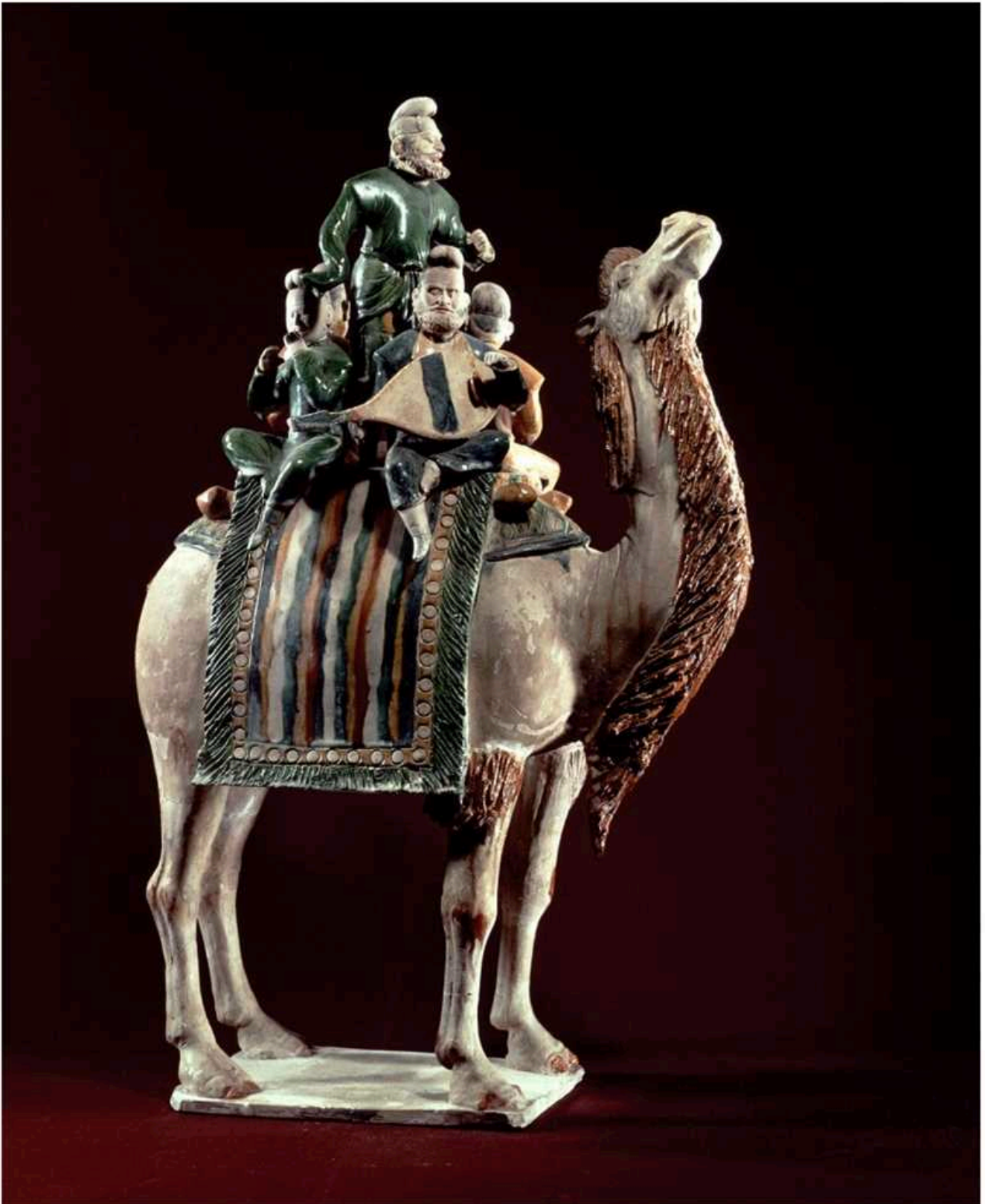
Connect at least two images to the expanded trade networks of the Post-classical era.



Borobudur
Ways of the World, First Edition
Robert Harding World Imagery/Alamy



Map of Mali
from the Voynich Manuscript
Bibliothèque nationale de France



Travels on the Silk Road
Ways of the World, First Edition
©Asian Art & Archaeology, Inc./Corbis

A. Imperial government--

B. Patriarchy

II. Change

A. Commercialized Economy Designed for World Market
& Long -distant trade

1. p.384--cheap transportation w/ canals, roads