

## Block, February 4,5

DJ: 1) none

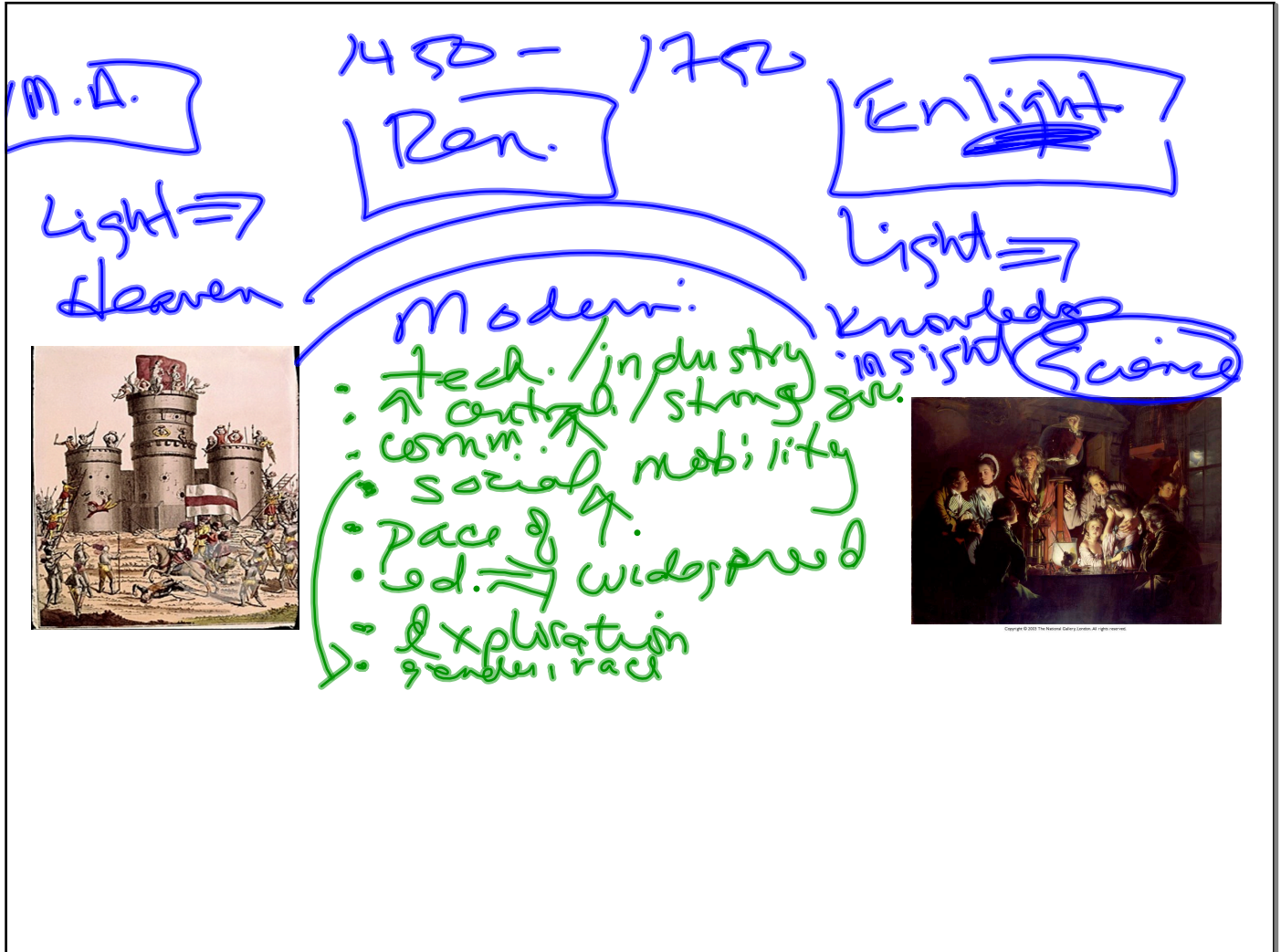
HW: 1) Unit Themes & Review Chart T 2/10

2) Enlight. Readings F 2/6

Ann.: Unit Test Block 2/11,12

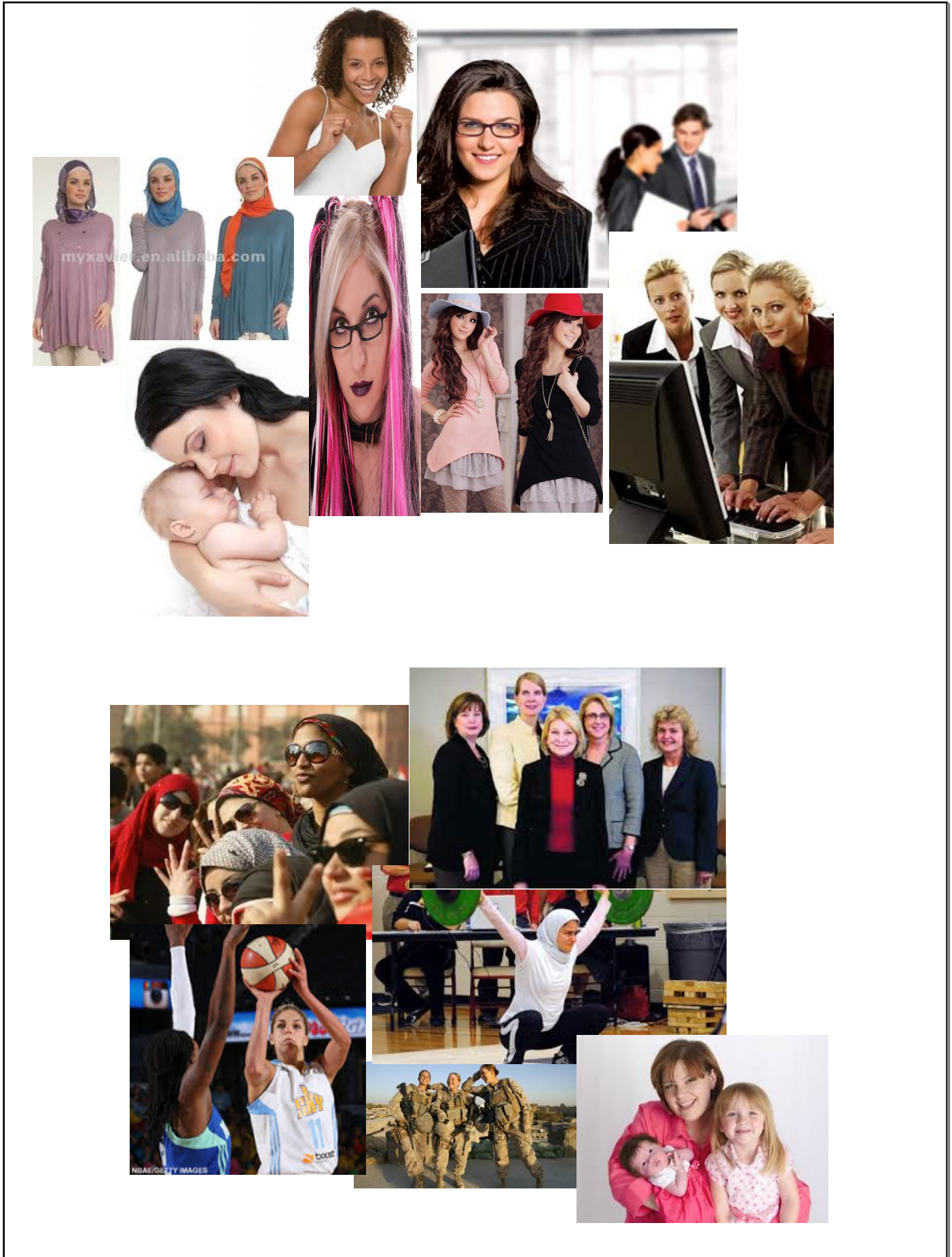
Today:

- 1) Role of women in modern era & outside Western Europe
- 2) Intro. Enlightenment





Women  $\rightarrow$  Ren. ???  
Yes & No



Beliefs, role of women, social classes

Traditional Patterns

Challenges to Patterns



W. Europe

R.C. → Madonna  
suns / converts

→ Protestant Reformation

↓ new  
• Bible of a hierarchy

Islam/Ottoman

inferior to men  
• legal 1/2  
• marriage control  
• diversity - expect.

• less control in public  
• ↓ prestige / rights

Africa

India

China

Compare the continuities and changes in gender roles of Christianity and Islam.

Thesis:

Topic Sentence:

2 Evidence/Analysis Combos :)